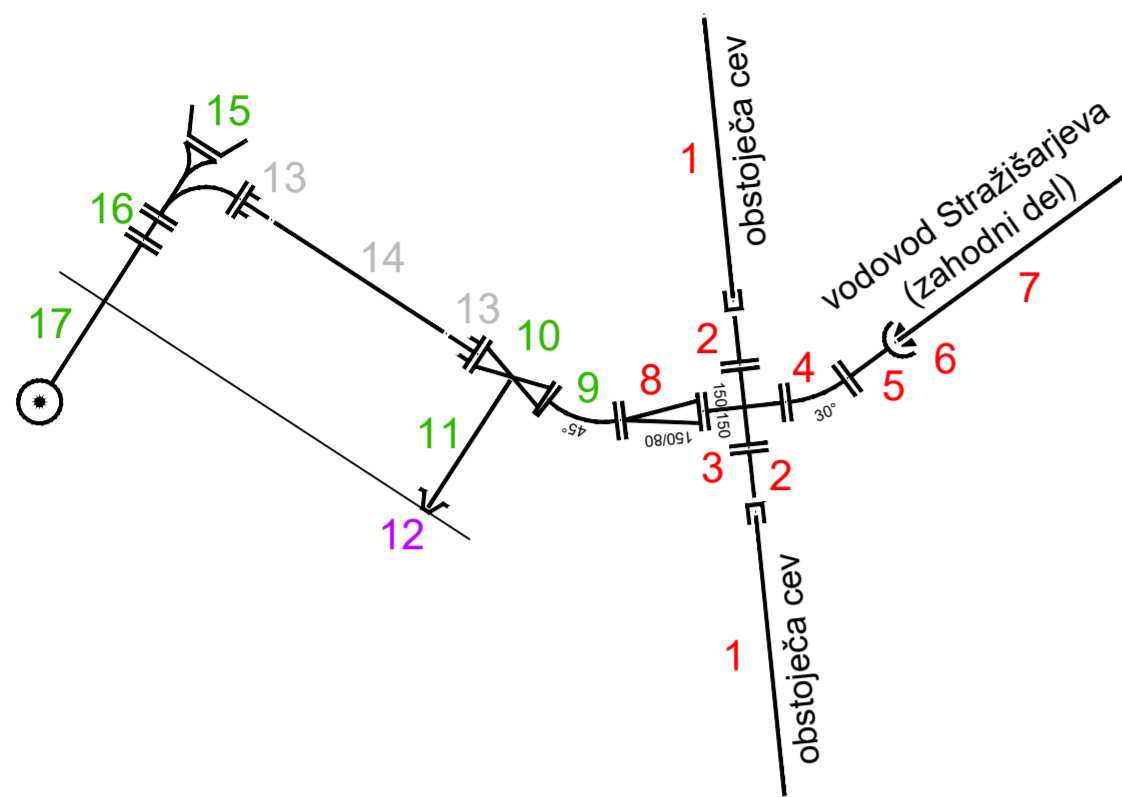
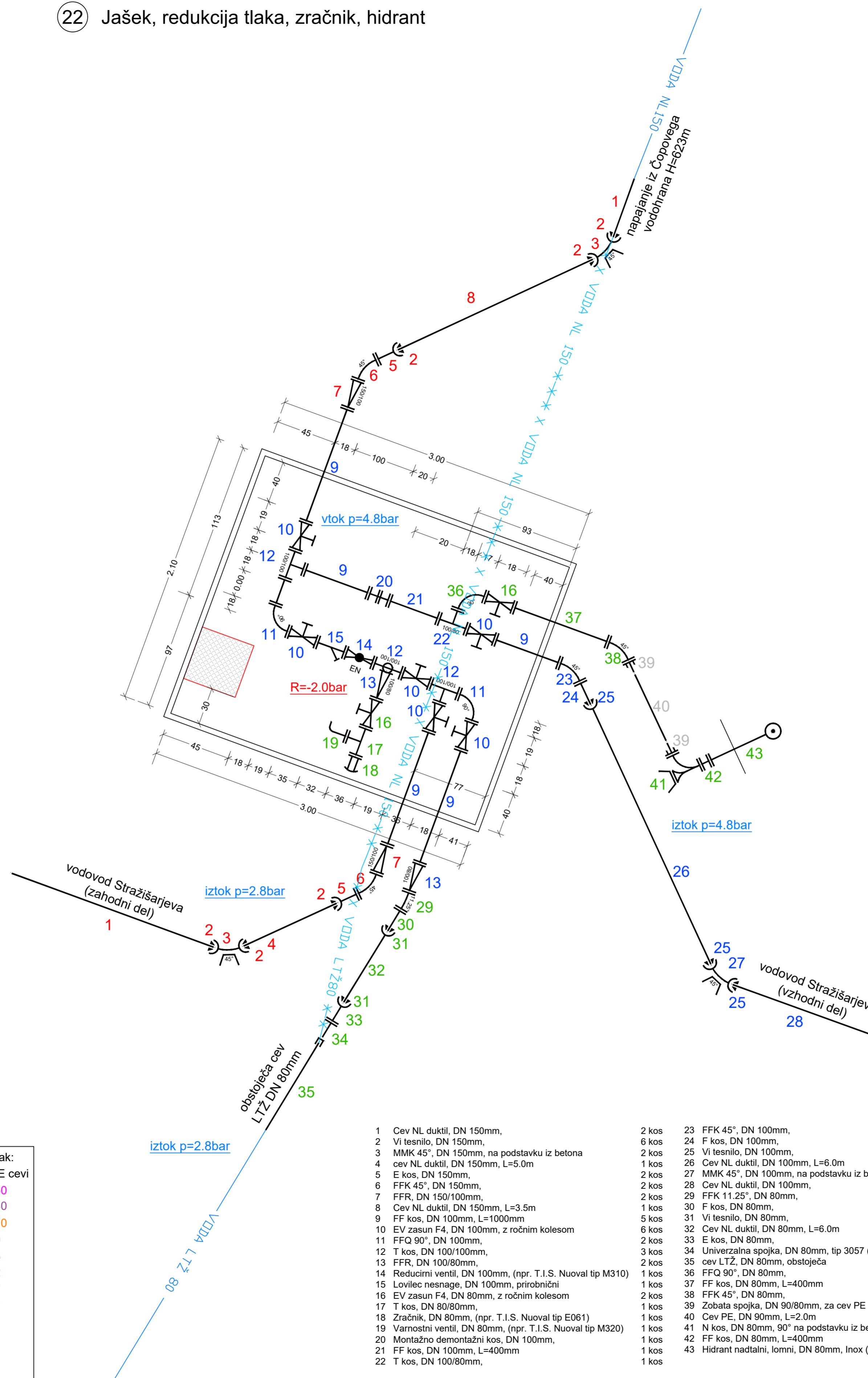


10 Priključitev na obstoječ vodovod

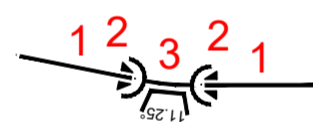


- |    |  |   |     |
|----|--|---|-----|
| 1  | cev NL duktil, DN 150mm, obstoječa                       | 2 | kos |
| 2  | Univerzalna spojka, DN 150mm, tip 3057 (+GF+)            | 2 | kos |
| 3  | TT kos, DN 150/150mm,                                    | 1 | kos |
| 4  | FFK 30°, DN 150mm,                                       | 1 | kos |
| 5  | E kos, DN 150mm,   | 1 | kos |
| 6  | Vi tesnilo, DN 150mm,                                    | 1 | kos |
| 7  | cev NL duktil, DN 150mm,                                 | 1 | kos |
| 8  | FFR, DN 150/80mm,  | 1 | kos |
| 9  | FFK 45°, DN 80mm,  | 1 | kos |
| 10 | EV zasun, DN 80mm,                                       | 1 | kos |
| 11 | Vgradbena garnitura, DN 80, teleskopska, L=1.2 do 2.0m   | 1 | kos |
| 12 | Cestna kapa, vodovodna, DN 200mm, na podstavku iz betona | 1 | kos |
| 13 | Zobata spojka, DN 90/80mm, za cev PE                     | 2 | kos |
| 14 | Cev PE, DN 90mm, L=3.0m                                  | 1 | kos |
| 15 | N kos, DN 80mm, 90° na podstavku iz betona               | 1 | kos |
| 16 | FF kos, DN 80mm, L=400mm                                 | 1 | kos |
| 17 | Hidrant nadtalni, lomni, DN 80mm, Inox (npr. IMP)        | 1 | kos |

22 Jašek, redukcija tlaka, zračnik, hidrant



11 Horizontalni lok 11.25°



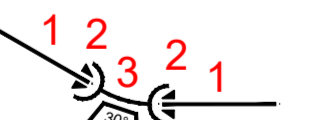
- |   |  |   |     |
|---|--|---|-----|
| 1 | Cev NL duktil, DN 150mm,                     | 2 | kos |
| 2 | Vi tesnilo, DN 150mm,                        | 2 | kos |
| 3 | MMK 11.25°, DN 150mm, na podstavku iz betona | 1 | kos |

12 Horizontalni lok 22.5°



- |   |   |   |     |
|---|---|---|-----|
| 1 | Cev NL duktil, DN 150mm,                    | 2 | kos |
| 2 | Vi tesnilo, DN 150mm,                       | 2 | kos |
| 3 | MMK 22.5°, DN 150mm, na podstavku iz betona | 1 | kos |

16 Horizontalni lok 30°



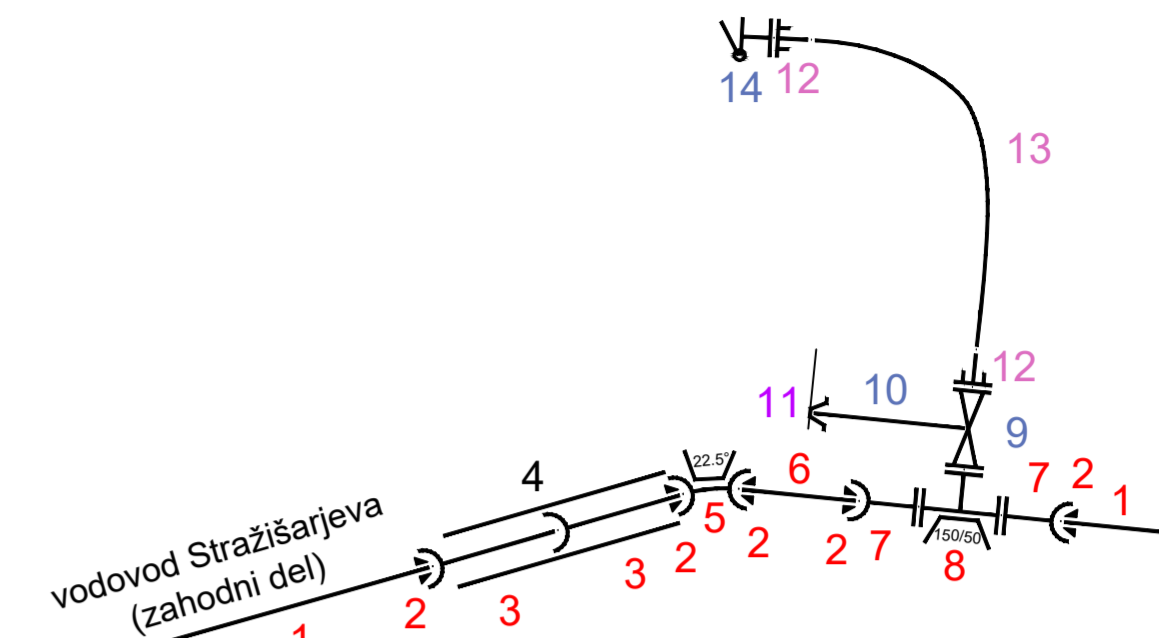
- |   |   |   |     |
|---|---|---|-----|
| 1 | Cev NL duktil, DN 150mm,                    | 2 | kos |
| 2 | Vi tesnilo, DN 150mm,                       | 2 | kos |
| 3 | MMK 30.0°, DN 150mm, na podstavku iz betona | 1 | kos |

LEGEDA barvnih oznak:

NL cevi	PP, PE cevi
DN 500	DN 160
DN 400	DN 140
DN 350	DN 110
DN 300	DN 90
DN 250	DN 63
DN 200	DN 32
DN 150	Ø 3/4"
DN 125	Ø 1/2"
DN 100	
DN 80	
DN 65	
DN 50	

- |    |   |   |     |    |   |   |     |
|----|---|---|-----|----|---|---|-----|
| 1  | Cev NL duktil, DN 150mm,                                  | 2 | kos | 23 | FFK 45°, DN 100mm,                                | 1 | kos |
| 2  | Vi tesnilo, DN 150mm,                                     | 6 | kos | 24 | F kos, DN 100mm,                                  | 1 | kos |
| 3  | MMK 45°, DN 150mm, na podstavku iz betona                 | 2 | kos | 25 | Vi tesnilo, DN 100mm,                             | 3 | kos |
| 4  | cev NL duktil, DN 150mm, L=5.0m                           | 2 | kos | 26 | Cev NL duktil, DN 100mm, L=6.0m                   | 1 | kos |
| 5  | E kos, DN 150mm,  | 2 | kos | 27 | MMK 45°, DN 100mm, na podstavku iz betona         | 1 | kos |
| 6  | FFK 45°, DN 150mm,  | 2 | kos | 28 | Cev NL duktil, DN 100mm,                          | 1 | kos |
| 7  | FFR, DN 150/100mm,  | 2 | kos | 29 | FFK 11.25°, DN 80mm,                              | 1 | kos |
| 8  | cev NL duktil, DN 150mm, L=3.5m                           | 1 | kos | 30 | F kos, DN 80mm,                                   | 1 | kos |
| 9  | FF kos, DN 100mm, L=1000mm                                | 5 | kos | 31 | Vi tesnilo, DN 80mm,                              | 2 | kos |
| 10 | EV zasun F4, DN 100mm, z ročnim kolesom                   | 6 | kos | 32 | Cev NL duktil, DN 80mm, L=6.0m                    | 1 | kos |
| 11 | FFQ 90°, DN 100mm,  | 2 | kos | 33 | E kos, DN 80mm,                                   | 1 | kos |
| 12 | T kos, DN 100/100mm,                                      | 3 | kos | 34 | Univerzalna spojka, DN 80mm, tip 3057 (+GF+)      | 1 | kos |
| 13 | FFR, DN 100/80mm,   | 2 | kos | 35 | cev LTZ, DN 80mm, obstoječa                       | 1 | kos |
| 14 | Reducirni ventil, DN 100mm, (npr. T.I.S. Nuoval tip M310) | 1 | kos | 36 | FFQ 90°, DN 80mm,                                 | 1 | kos |
| 15 | Lovilec nesnage, DN 100mm, prirobnični                    | 1 | kos | 37 | FF kos, DN 80mm, L=400mm                          | 1 | kos |
| 16 | EV zasun F4, DN 80mm, z ročnim kolesom                    | 2 | kos | 38 | FFK 45°, DN 80mm,                                 | 1 | kos |
| 17 | T kos, DN 80/80mm,  | 1 | kos | 39 | Zobata spojka, DN 90/80mm, za cev PE              | 2 | kos |
| 18 | Zračnik, DN 80mm, (npr. T.I.S. Nuoval tip E061)           | 1 | kos | 40 | Cev PE, DN 90mm, L=2.0m                           | 1 | kos |
| 19 | Varnostni ventil, DN 80mm, (npr. T.I.S. Nuoval tip M320)  | 1 | kos | 41 | N kos, DN 80mm, 90° na podstavku iz betona        | 1 | kos |
| 20 | Montažno demontažni kos, DN 100mm,                        | 1 | kos | 42 | FF kos, DN 80mm, L=400mm                          | 1 | kos |
| 21 | FF kos, DN 100mm, L=400mm                                 | 1 | kos | 43 | Hidrant nadtalni, lomni, DN 80mm, Inox (npr. IMP) | 1 | kos |
| 22 | T kos, DN 100/80mm,                                       | 1 | kos |    |   |   |     |

17-19 Podboj pod Čopovim grabnom, praznotok



- |    |  |   |     |
|----|--|---|-----|
| 1  | Cev NL duktil, DN 150mm,                                 | 2 | kos |
| 2  | Vi tesnilo, DN 150mm,                                    | 5 | kos |
| 3  | Cev NL duktil, DN 150mm, L=6.0m                          | 2 | kos |
| 4  | Jeklena zaščitna cev, 324/7.1mm, L=8.0m                  | 1 | kos |
| 5  | MMK 22.5°, DN 150mm, na podstavku iz betona              | 1 | kos |
| 6  | Cev NL duktil, DN 150mm, L=1.5m                          | 1 | kos |
| 7  | E kos, DN 150mm,   | 2 | kos |
| 8  | T kos, DN 150/50mm, na podstavku iz betona               | 1 | kos |
| 9  | EV zasun, DN 50mm,                                       | 1 | kos |
| 10 | Vgradbena garnitura, DN 50mm, teleskopska, L=1.2 do 2.0m | 1 | kos |
| 11 | Cestna kapa, vodovodna, DN 200mm, na podstavku iz betona | 1 | kos |
| 12 | Zobata spojka, Ø 63/50mm, za cev PE                      | 2 | kos |
| 13 | Cev PE, Ø 63, L=6.0m                                     | 1 | kos |
| 14 | Žabji pokrov, DN 50mm,                                   | 1 | kos |

UREDITEV KOMUNALNE INFRASTRUKTURE  
NA CESTI BRATOV STRAŽIŠARJEV - 3. FAZA

<b>Investitor:</b> OBČINA JESENICE Cesta železarjev 6 4270 JESENICE	<b>Objekt, lokacija:</b> UREDITEV KOMUNALNE INFRASTRUKTURE NA CESTI BRATOV STRAŽIŠARJEV - 3. FAZA
<b>Projektant:</b>  d.o.o. Križe	<b>Načrt:</b> 2/2 - načrt gradbeništva NAČRT VODOVODA
<b>Vrsta projektna dokumentacije:</b> PZI	<b>Vsebina, naslov risbe:</b> Montažne sheme vozlišč - vodovod 1 - DN 150
<b>Odg. projektant:</b> Ivan ELER, udig.	<b>Ident. št.:</b> G-0326
<b>Izdajal:</b> Uroš FERJAN, udig.	<b>Ident. št. risbe:</b> G-1488
<b>Kontroliral:</b>	<b>Ime in priimek:</b>
<b>Naročnik:</b>	<b>St. projekta:</b> P-647
	<b>St. načrta:</b> P-647/V
	<b>St. risbe:</b> 2/2.G.9
	<b>Merilo:</b>
	<b>Datum:</b> januar 2020
	<b>Evidentiranje sprememb:</b>